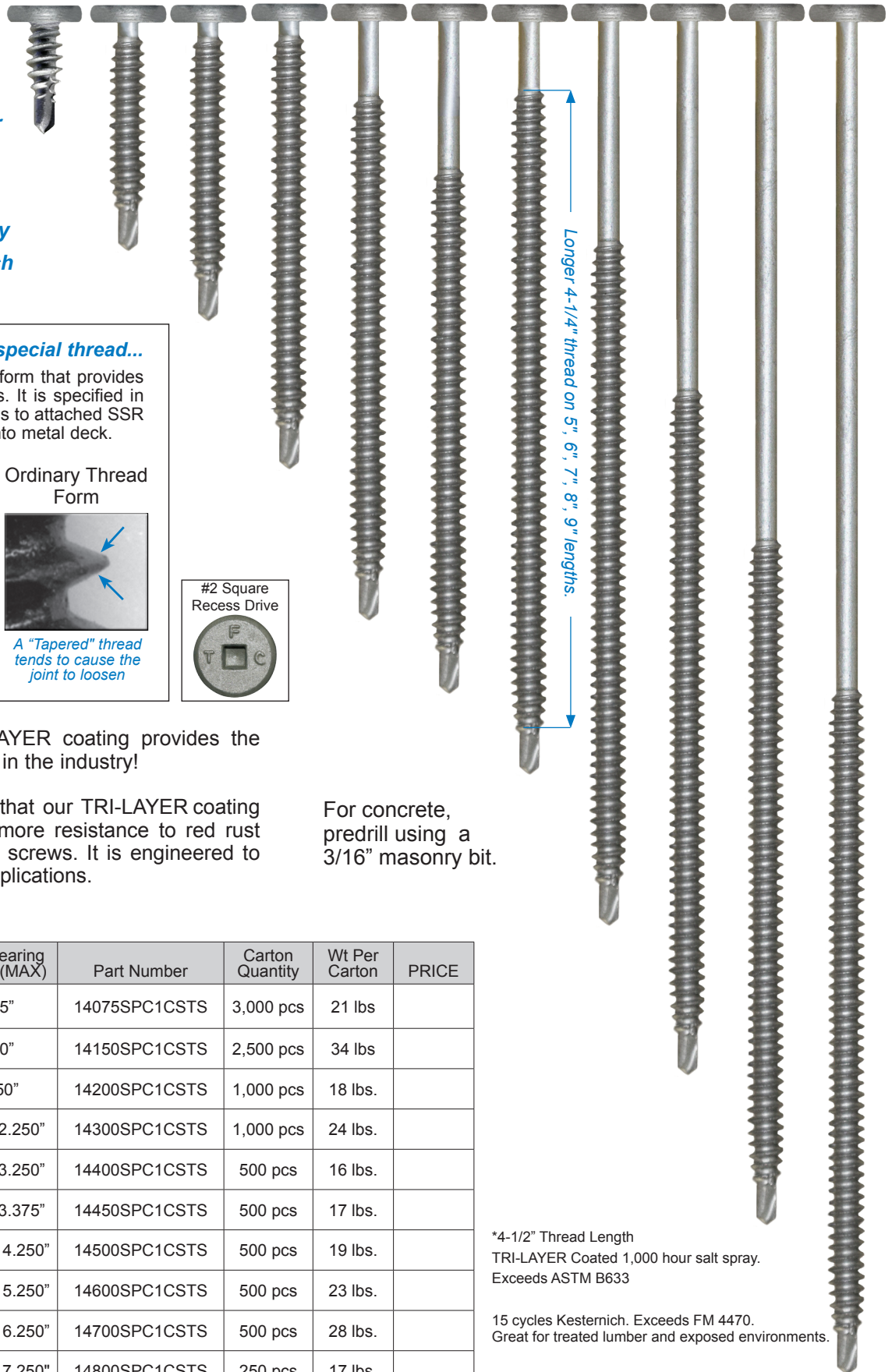


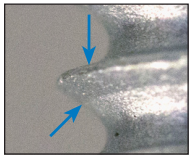
- Largest selection in the industry.
- #2 Square recess for driving stability.
- Fasten into wood, metal up to 16ga, or concrete consistently
- Can be used to attach nail base



**Here is why we use a special thread...**

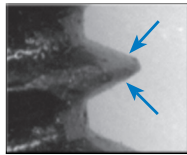
We use a buttress thread form that provides exceptional clamping loads. It is specified in many metal roofing systems to attached SSR clips over rigid insulation into metal deck.

**Silver C#14 with Buttress Thread**



"Flat" thread keeps the joint tight

**Ordinary Thread Form**



A "Tapered" thread tends to cause the joint to loosen



Longer 4-1/4" thread on 5", 6", 7", 8", 9" lengths.

**Silver C#14** with TRI-LAYER coating provides the best corrosion protection in the industry!

Salt spray tests confirm that our TRI-LAYER coating provides over 10 times more resistance to red rust than black epoxy coated screws. It is engineered to perform in a variety of applications.

For concrete, predrill using a 3/16" masonry bit.

**Sizes**

Description	Load Bearing Length (MAX)	Part Number	Carton Quantity	Wt Per Carton	PRICE
#14-13 x 3/4" DP1	.125"	14075SPC1CSTS	3,000 pcs	21 lbs	
#14-13 x 1-1/2" DP1	.750"	14150SPC1CSTS	2,500 pcs	34 lbs	
#14-13 x 2" DP1	1.250"	14200SPC1CSTS	1,000 pcs	18 lbs.	
#14-13 x 3" DP1	.125" - 2.250"	14300SPC1CSTS	1,000 pcs	24 lbs.	
#14-13 x 4" DP1	.125" - 3.250"	14400SPC1CSTS	500 pcs	16 lbs.	
#14-13 x 4-1/2" DP1	.625" - 3.375"	14450SPC1CSTS	500 pcs	17 lbs.	
#14-13 x 5" DP1*	1.125" - 4.250"	14500SPC1CSTS	500 pcs	19 lbs.	
#14-13 x 6" DP1*	2.125" - 5.250"	14600SPC1CSTS	500 pcs	23 lbs.	
#14-13 x 7" DP1*	3.875" - 6.250"	14700SPC1CSTS	500 pcs	28 lbs.	
#14-13 x 8" DP1*	4.875" - 7.250"	14800SPC1CSTS	250 pcs	17 lbs.	
#14-13 x 9" DP1*	5.875" - 8.250"	14900SPC1CSTS	250 pcs	19 lbs.	

\*4-1/2" Thread Length  
TRI-LAYER Coated 1,000 hour salt spray.  
Exceeds ASTM B633

15 cycles Kesternich. Exceeds FM 4470.  
Great for treated lumber and exposed environments.

**Installation:** Do not use impact drivers!  
Use 2,500 RPM max variable speed screw drivers with torque control or depth sensing nosepiece.